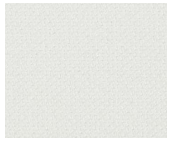


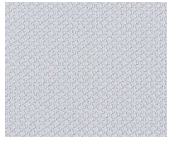
Steelcut

group E

Steelcut 2
group E



110



120



240



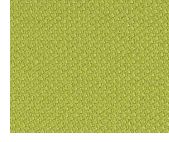
155



445



435



950



535



545



660



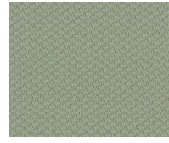
820



615



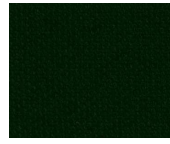
780



935



985



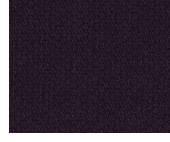
975



695



935



685

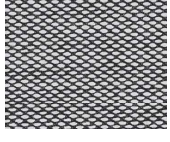
Steelcut Trio 2
group E



105



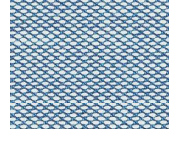
133



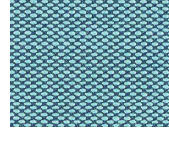
124



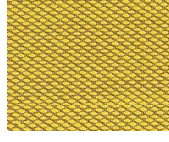
713



733



983



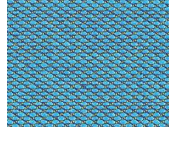
453



933



953



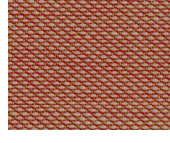
853



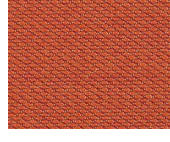
835



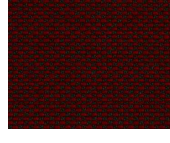
665



515



533



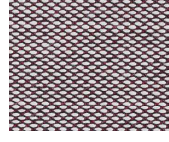
665



820



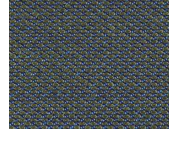
144



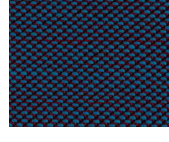
144



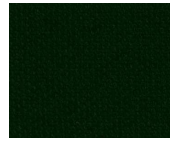
383



883



745



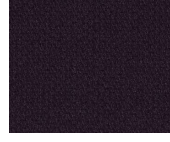
465



353



353



465

Steelcut 2 / Steelcut Trio 2

Product information

Steelcut 2 and Steelcut Trio 2 have the same construction featuring an innovative weave which creates a three-dimensional surface resembling steel points. This complex weave gives the fabric a simple and precise expression.

Steelcut 2 and Steelcut Trio 2 complete each other perfectly in terms of color options. While Steelcut 2 is unicoloured, Steelcut Trio 2 colours are created by using three different toned yarns giving different shades. The colour scale of both fabrics create harmonies by combining vivid floral hues, earthy tones, neutral skin tones and fresh colours.

Technical information

EN	D	F	ES
Composition 90% New Wool, 10% Nylon	Zusammensetzung 90% Schurwolle, 10% Nylon	Composition 90% Laine Vierge, 10% Nylon	Composición 90% Lana Virgen, 10% Nylon
Yarn type Staple, worsted	Garntyp Faser, Kammgarn	Type de fil Fibre, peigné	Tipo de hilo Fibra, estambre
Width 140 cm	Breite 140 cm	Largeur 140 cm	Ancho 140 cm
Weight Steelcut 2: 590 gr/m2 Steelcut Trio 2: 550 gr/m2	Gewicht Steelcut 2: 590 gr/m2 Steelcut Trio 2: 550 gr/m2	Poids Steelcut 2: 590 gr/m2 Steelcut Trio 2: 550 gr/m2	Peso Steelcut 2: 590 gr/m2 Steelcut Trio 2: 550 gr/m2
Flammability EN 1021-1/2 BS 5852 part 1 BS 5852 ignition source 2-3 DIN 4102 B2	Feuersicherung EN 1021-1/2 BS 5852 part 1 BS 5852 zündquelle 2-3 DIN 4102 B2	Flammabilité EN 1021-1/2 BS 5852 partie 1 BS 5852 source d'inflammation 2-3 DIN 4102 B2	Inflamabilidad EN 1021-1/2 BS 5852 parte 1 BS 5852 fuente de ignición 2-3 DIN 4102 B2
Önorm B1/Q1 NF D 60 013 UNI 9175, 1IM US Cal. Tech. Bull. 117 AS/NZS 3837 IMO A.652(16) Crib 5 when flame protected No use of bromin	Önorm B1/Q1 NF D 60 013 UNI 9175, 1IM US Cal. Tech. Bull. 117 AS/NZS 3837 IMO A.652(16) Crib 5 Wenn die flammgeschützte Keine Verwendung von Brom	Önorm B1/Q1 NF D 60 013 UNI 9175, 1IM US Cal. Tech. Bull. 117 AS/NZS 3837 IMO A.652(16) Crib 5 Quand protégé contre la flamme Pas d'utilisation de brome	Önorm B1/Q1 NF D 60 013 UNI 9175, 1IM US Cal. Tech. Bull. 117 AS/NZS 3837 IMO A.652(16) Crib 5 Cuando protegido contra la llama Sin el uso de bromo
Light Fastness Note 5-7 (ISO 105-B02)	Lichtechtheit Note 5-7 (ISO 105-B02)	Solidité à la lumière Note 5-7 (ISO 105-B02)	Solidez a la luz Note 5-7 (ISO 105-B02)
Pilling Note 3-4 (EN ISO 12945)	Pilling Note 3-4 (EN ISO 12945)	Boulochage Note 3-4 (EN ISO 12945)	Pilling Note 3-4 (EN ISO 12945)
Abrasion Resistance Steelcut 2: 80,000 Martindale Cycles (EN ISO 12947) Steelcut Trio 2: 100,000 Martindale Cycles (EN ISO 12947)	Scheuerfestigkeit Steelcut 2: 80,000 Martindale Fahrräder (EN ISO 12947) Steelcut Trio 2: 100,000 Martindale Fahrräder (EN ISO 12947)	Résistance à l'abrasion Steelcut 2: 80,000 Martindale Cycles (EN ISO 12947) Steelcut Trio 2: 100,000 Martindale Cycles (EN ISO 12947)	Resistencia a la abrasión Steelcut 2: 80,000 Martindale Cycles (EN ISO 12947) Steelcut Trio 2: 100,000 Martindale Cycles (EN ISO 12947)
Cleaning Vacuuming and dry cleaning	Reinigung Staubsaugen und chemische Reinigung.	Nettoyage Aspiration et nettoyage à sec.	Limpieza Aspiradora y limpieza en seco.