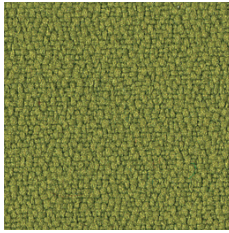


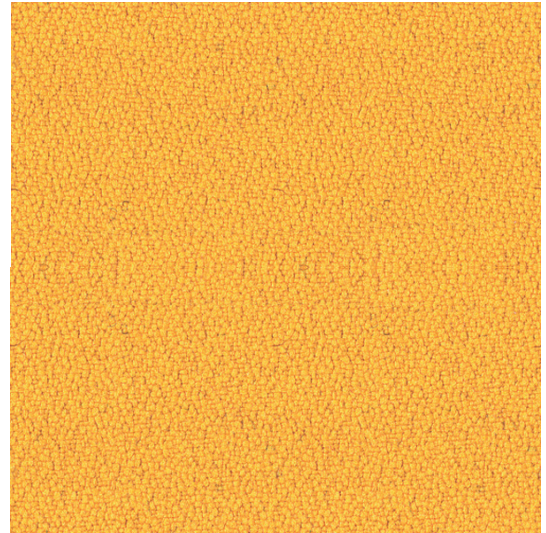
Xtreme plus | Lucia



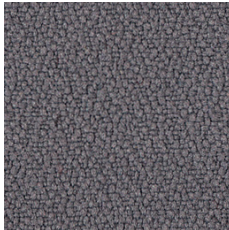
Y40 | -



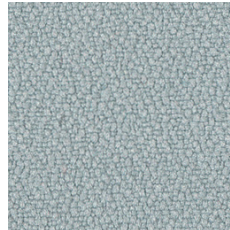
Y87 | YF0



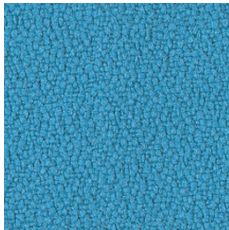
Y38 | YH7



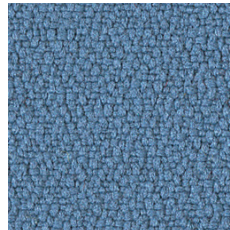
Y42 | -



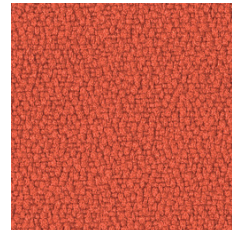
Y52 | YE2



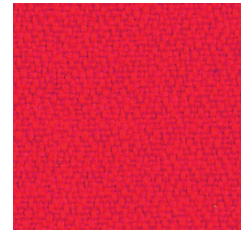
Y94 | -



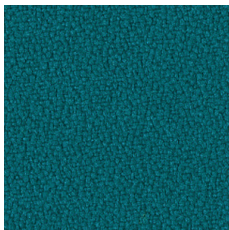
Y51 | -



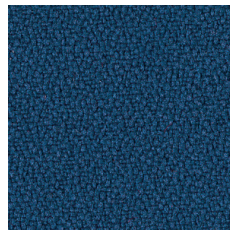
Y47 | YE7



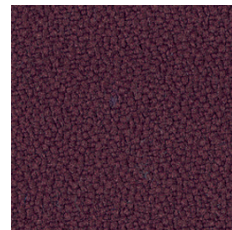
Y65 | YH5



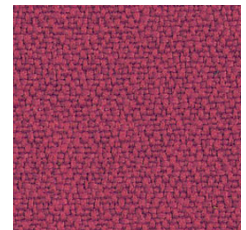
Y84 | YH3



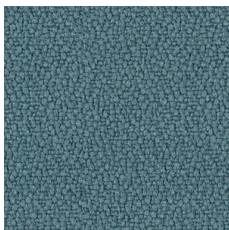
Y46 | YE6



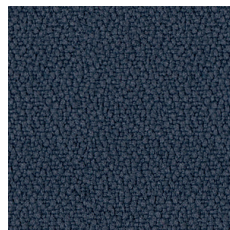
Y49 | YE9



Y57 | YR7



Y58 | -



Y48 | -

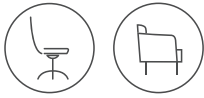


Y59 | YF9



Y41 | YE1

Xtreme plus



EN	FR	DE
Composition 100% Recycled Polyester	Composition 100% Polyester recyclé	Zusammensetzung 100% Recycled Polyester
Weight 310 g/m ²	Poids 310 g/m ²	Gewicht 310 g/m ²
Abrasion resistance 100.000 Martindale cycles	Résistance à l'abrasion 100.000 Cycles de Martindale	Abriebfestigkeit 100.000 Martindale-Zyklen
Flammability BS EN 1021 - 1 (cigarette) BS EN 1021 - 2 (match) BS 7176:2007 Low Hazard Crib 5 (BS 5852 part II) BS 7176:2007 Medium Hazard DIN 4102 B1 NF-P-92-507 M1 UNI 8456 & UNI 9174 Class 1	Inflammabilité BS EN 1021 - 1 (cigarette) BS EN 1021 - 2 (allumette) BS 7176:2007 Low Hazard Crib 5 (BS 5852 part II) BS 7176:2007 Medium Hazard DIN 4102 B1 NF-P-92-507 M1 UNI 8456 & UNI 9174 Class 1	Entflammbarkeit BS EN 1021 - 1 (Zigarette) BS EN 1021 - 2 (Streichholz) BS 7176:2007 Low Hazard Crib 5 (BS 5852 part II) BS 7176:2007 Medium Hazard DIN 4102 B1 NF-P-92-507 M1 UNI 8456 & UNI 9174 Class 1
Light fastness 6 (EN ISO 105 - B02)	Stabilité à la lumière 6 (EN ISO 105 - B02)	Lichtgeschwindigkeit 6 (EN ISO 105 - B02)
Fastness to rubbing wet: 4; dry: 4 (ISO 105 - X12)	Résistance au frottement humide: 4; sec: 4 (ISO 105 - X12)	Reibechtheit nass: 4; trocken: 4 (ISO 105 - X12)

Lucia



EN	FR	DE
Composition 100% Recycled Polyester	Composition 100% Polyester recyclé	Zusammensetzung 100% Recycling-Polyester
Weight 260 g/m ²	Poids 260 g/m ²	Gewicht 260 g/m ²
Flammability BS EN 1021 - 1 (cigarette) BS EN 1021 - 2 (match) BS 7176:2007 Low Hazard BS 476 Part 7 Class 1	Inflammabilité BS EN 1021 - 1 (cigarette) BS EN 1021 - 2 (allumette) BS 7176:2007 Low Hazard BS 476 Part 7 Class 1	Entflammbarkeit BS EN 1021 - 1 (Zigarette) BS EN 1021 - 2 (Streichholz) BS 7176:2007 Low Hazard BS 476 Part 7 Class 1
Light fastness 6 (EN ISO 105 - B02)	Stabilité à la lumière 6 (EN ISO 105 - B02)	Lichtgeschwindigkeit 6 (EN ISO 105 - B02)
Fastness to rubbing wet: 4; dry: 4 (ISO 105 - X12)	Résistance au frottement humide: 4; sec: 4 (ISO 105 - X12)	Reibechtheit nass: 4; trocken: 4 (ISO 105 - X12)

Note: Batch to batch variations in shade may occur within commercial tolerances.

Remarque: Une variation de couleurs peut provenir (commerciallement tolérable).

Wichtig: Handelsübliche Farbabweichungen können auftreten und berechtigen nicht zur Reklamation.