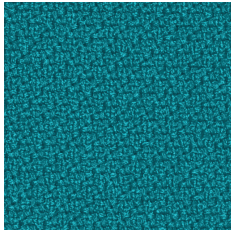
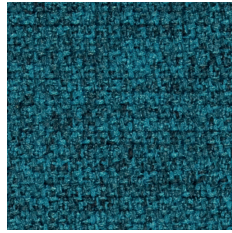


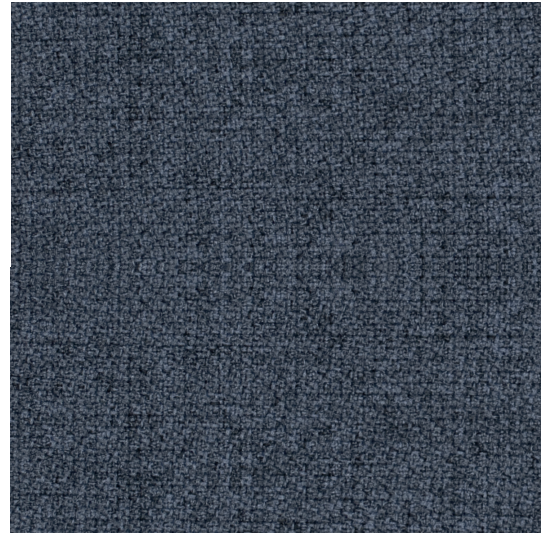
Step | Step Melange



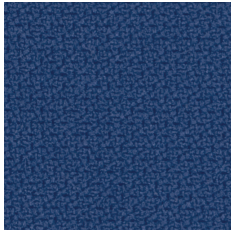
L03



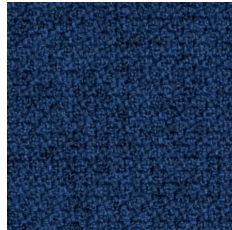
L02



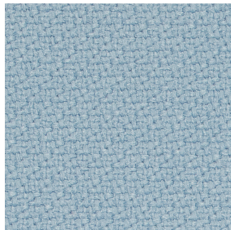
L14



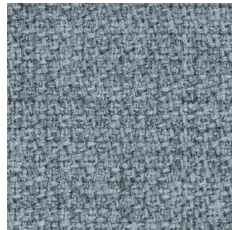
L05



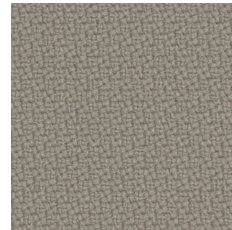
L04



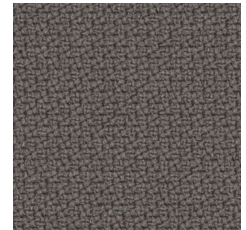
L07



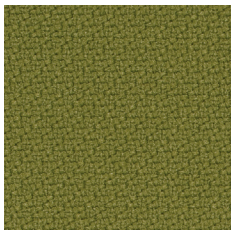
L06



L15



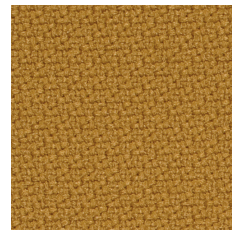
L21



L09



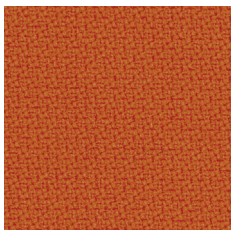
L08



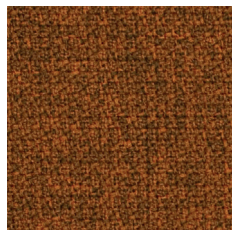
L17



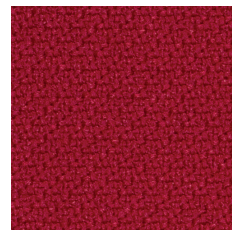
L16



L11



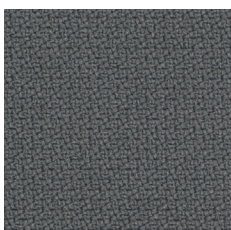
L10



L19



L18



L13



L12

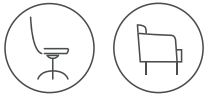


L20



L01

Step | Step Melange



EN	FR	DE
Composition 100% Trevira CS® Flame Retardant Polyester	Coposition 100% Trevira CS® Polyester Inflammable	Zusammensetzung 100% Trevira CS® Flammhemmendes Polyester
Weight 470 g/m ²	Poids 470 g/m ²	Gewicht 470 g/m ²
Abrasion resistance 100.000 Martindale cycles	Résistance à l'abrasion 100.000 Cycles de Martindale	Abriebfestigkeit 100.000 Martindale-Zyklen
Flammability BS EN 1021 - 1 (Cigarette) BS EN 1021 - 2 (Match) BS 5852 Part 1 0,1 Cigarette & match Crib 5 (BS 5852 part II) BS 7176 Medium Hazard UNI 9175 & UNI 9175/FA1 Classe 1 IM IMO MSC 307(88) Annexe 1 part 8 MED Certificate IMO DIN 4102 B1 NFP 92-503/504/505 M1 ÖNORM B 3825-B1-3800-Q1 UK FAR/JAR 25.853 (a) (i) (ii) AM 18 - NF D 60-013 - (only for fabric) CA TB 117-2013 DIN EN 13501-1 B-s1, d0	Inflammabilité BS EN 1021 - 1 (Cigarette) BS EN 1021 - 2 (Allumette) BS 5852 Part 1 0,1 Cigarette & allumette Crib 5 (BS 5852 partie II) BS 7176 Medium Hazard UNI 9175 & UNI 9175/FA1 Classe 1 IM IMO MSC 307(88) Partie 8 de Annexe 1 MED Certificat IMO DIN 4102 B1 NFP 92-503/504/505 M1 ÖNORM B 3825-B1-3800-Q1 UK FAR/JAR 25.853 (a) (i) (ii) AM 18 - NF D 60-013 - (uniquement pour les tissus) CA TB 117-2013 DIN EN 13501-1 B-s1, d0	Flammability BS EN 1021 - 1 (Zigarette) BS EN 1021 - 2 (Streichholz) BS 5852 Part 1 0,1 Zigarette & Streichholz Crib 5 (BS 5852 teil II) BS 7176 Medium Hazard UNI 9175 & UNI 9175/FA1 Classe 1 IM IMO MSC 307(88) Annektieren 1 teil 8 MED Zertifikat IMO DIN 4102 B1 NFP 92-503/504/505 M1 ÖNORM B 3825-B1-3800-Q1 UK FAR/JAR 25.853 (a) (i) (ii) AM 18 - NF D 60-013 - (nur für Stoff) CA TB 117-2013 DIN EN 13501-1 B-s1, d0
Light fastness 5-7 (EN ISO 105 - B02)	Stabilité à la lumière 5-7 (EN ISO 105 - B02)	Lichtgeschwindigkeit 5-7 (EN ISO 105 - B02)
Fastness to rubbing wet: 4-5; dry: 4-5 (ISO 105 - X12)	Résistance au frottement humide: 4-5; sec: 4-5 (ISO 105 - X12)	Reibechtheit nass: 4-5; trocken: 4-5 (ISO 105 - X12)

Note: Batch to batch variations in shade may occur within commercial tolerances.

Remarque: Une variation de couleurs peut provenir (commerciallement tolérable).

Wichtig: Handelsübliche Farbabweichungen können auftreten und berechtigen nicht zur Reklamation.