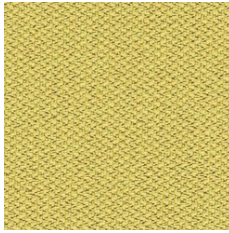
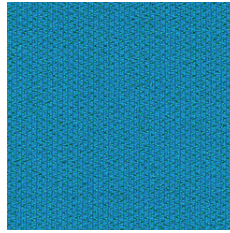


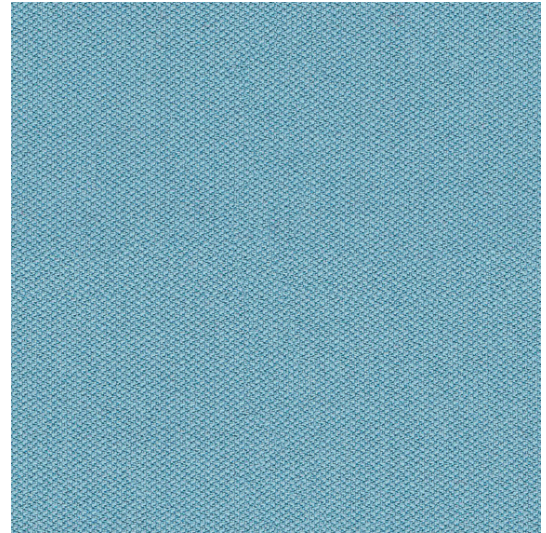
Era



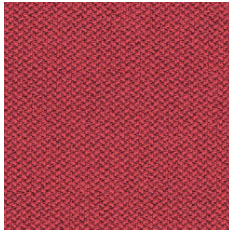
C03



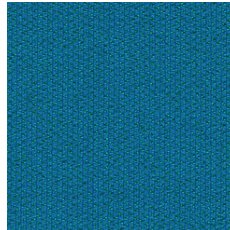
C10



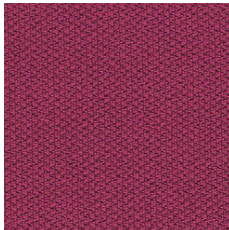
C20



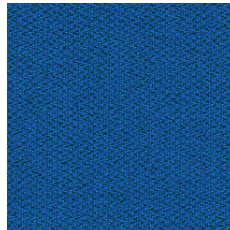
C06



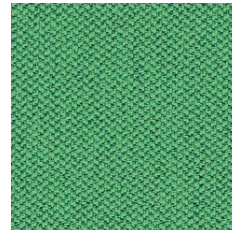
C15



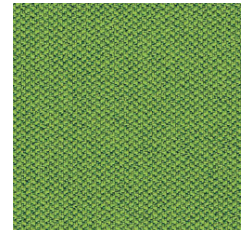
C17



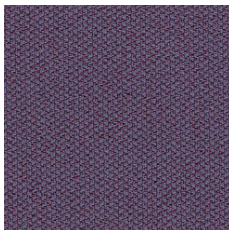
C12



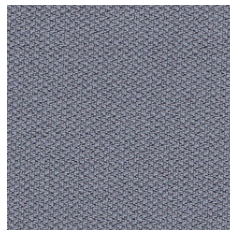
C18



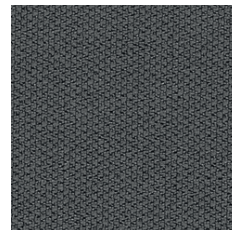
C16



C09



C11

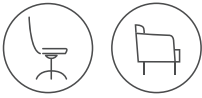


C13



C14

Era



EN	FR	DE
Composition 100% Polyester	Composition 100% Polyester	Zusammensetzung 100% Polyester
Weight 320 g/m ²	Poids 320 g/m ²	Gewicht 320 g/m ²
Abrasion resistance 100.000 Martindale cycles	Résistance à l'abrasion 100.000 Cycles Martindale	Abriebfestigkeit 100.000 Martindale-Zyklen
Flammability BS EN 1021 - 1 (cigarette) BS EN 1021 - 2 (match) BS 7176 Low Hazard	Inflammabilité BS EN 1021 - 1 (cigarette) BS EN 1021 - 2 (allumette) BS 7176 Low Hazard	Entflammbarkeit BS EN 1021 - 1 (Zigarette) BS EN 1021 - 2 (Streichholz) BS 7176 Low Hazard
Light fastness 5 (EN ISO 105 - B02)	Stabilité à la lumière 5 (EN ISO 105 - B02)	Lichtgeschwindigkeit 5 (EN ISO 105 - B02)
Fastness to rubbing wet: 4; dry: 4 (ISO 105 - X12)	Résistance au frottement humide: 4, sec: 4 (ISO 105 - X12)	Reibechtheit nass: 4, trocken: 4 (ISO 105 - X12)

Note: Batch to batch variations in shade may occur within commercial tolerances.

Remarque: Une variation de couleurs peut provenir (commerciallement tolérable).

Wichtig: Handelsübliche Farbabweichungen können auftreten und berechtigen nicht zur Reklamation.