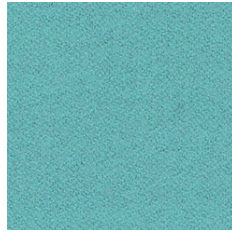


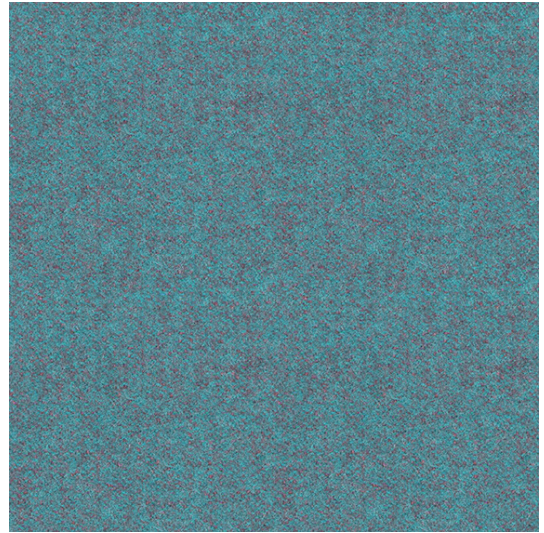
Synergy



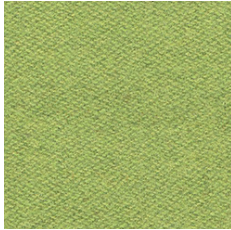
S45



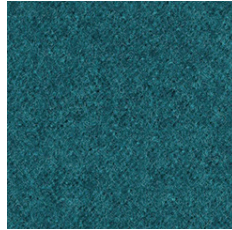
S55



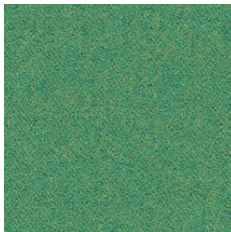
S56



S46



S59



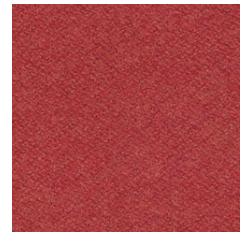
S53



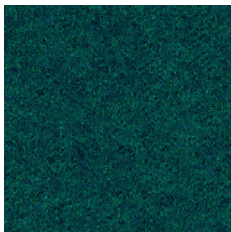
S62



S84



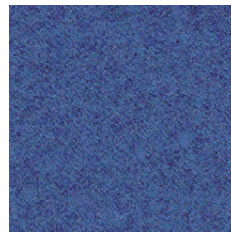
S85



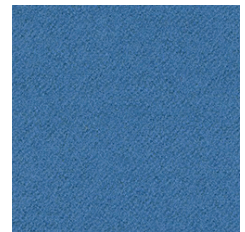
S50



S69



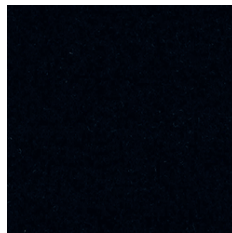
S68



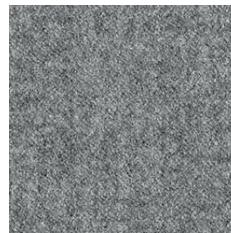
S63



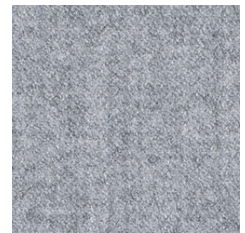
S17



S27



S16



S08

Synergy



EN	FR	DE
Composition 95% Virgin Wool, 5% Polyamide	Composition 95% Laine Vierge, 5% Polyamid	Zusammensetzung 95% Schurwolle, 5% Polyamid
Weight 400 g/m ²	Poids 400 g/m ²	Gewicht 400 g/m ²
Abrasion resistance 100.000 Martindale cycles	Résistance à l'abrasion 100.000 Cycles Martindale	Abriebfestigkeit 100.000 Martindale-Zyklen
Flammability BS EN 1021 - 1 (cigarette) BS EN 1021 - 2 (match) BS 7176 Low Hazard UNI 9175 Classe 1 IM	Inflammabilité BS EN 1021 - 1 (cigarette) BS EN 1021 - 2 (allumette) BS 7176 Low Hazard UNI 9175 Classe 1 IM	Flammability BS EN 1021 - 1 (Zigarette) BS EN 1021 - 2 (Streichholz) BS 7176 Low Hazard UNI 9175 Classe 1 IM
Light fastness 5 (EN ISO 105 - B02)	Stabilité à la lumière 5 (EN ISO 105 - B02)	Lichtgeschwindigkeit 5 (EN ISO 105 - B02)
Fastness to rubbing wet: 4; dry: 4 (ISO 105 - X12)	Résistance au frottement humide: 4, sec: 4 (ISO 105 - X12)	Reibechtheit nass: 4, trocken: 4 (ISO 105 - X12)

Note: Batch to batch variations in shade may occur within commercial tolerances.

Remarque: Une variation de couleurs peut provenir (commerciallement tolérable).

Wichtig: Handelsübliche Farbabweichungen können auftreten und berechtigen nicht zur Reklamation.