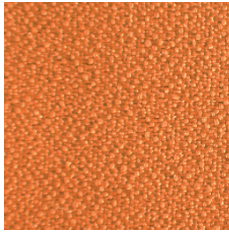
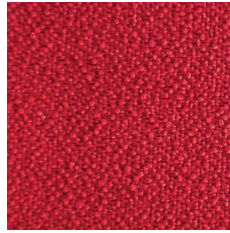


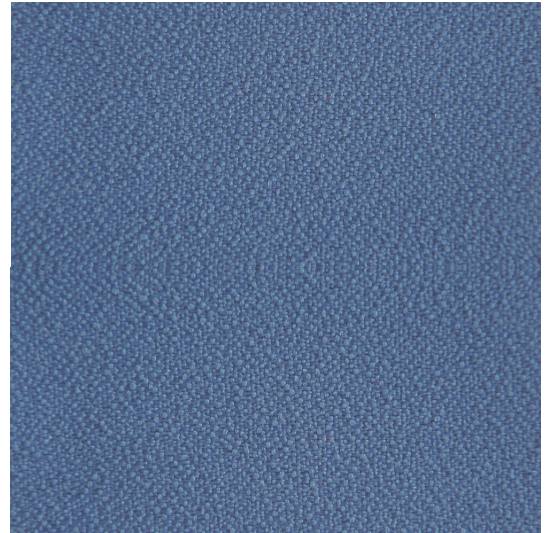
Bondai



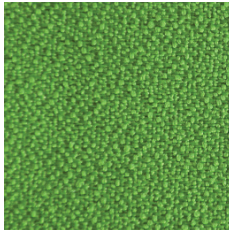
GE3



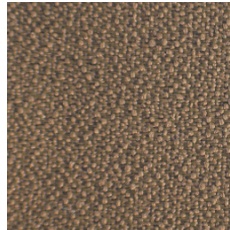
GF5



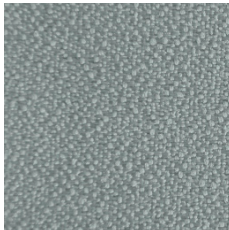
GF6



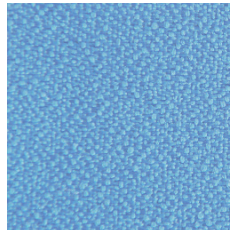
GE8



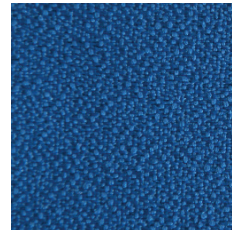
GE7



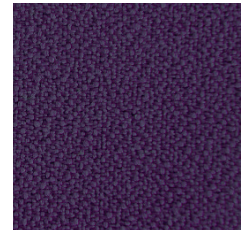
GE2



GE6



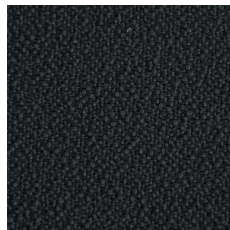
GE4



GE5



GE9



GE1

Bondai



EN	FR	DE
Composition 100% Polyester	Coposition 100% Polyester	Zusammensetzung 100% Polyester
Weight 250 g/m ²	Poids 250 g/m ²	Gewicht 250 g/m ²
Abrasion resistance 150.000 Martinda le cycles	Résistance à l'abrasion 150.000 Cycles de Martinda le	Abrieb festig keit 150.000 Martinda le-Zyklen
Flammability BS EN 1021 - 1 (ciga rette) BS EN 1021 - 2 (match) Crib 5 (BS 5852 part II) BS 7176 Medium Hazar d UNI 9175 & UNI 9175/ FA1 Cla sse 1 IM	Infl ammabili té BS EN 1021 - 1 (ciga rette) BS EN 1021 - 2 (allumet te) Crib 5 (BS 5852 part II) BS 7176 Medium Hazar d UNI 9175 & UNI 9175/ FA1 Cla sse 1 IM	Flammability BS EN 1021 - 1 (ziga rette) BS EN 1021 - 2 (streichholz) Crib 5 (BS 5852 part II) BS 7176 Medium Hazar d UNI 9175 & UNI 9175/ FA1 Cla sse 1 IM
Light fastness 6 (EN ISO 105 - B02)	Stabilité à la lumière 6 (EN ISO 105 - B02)	Lichtgeschwindig keit 6 (EN ISO 105 - B02)
Fastness to rubbing wet: 4; dry: 5 (ISO 105 - X12)	Résistance au frottement humide: 4; sec: 5 (ISO 105 - X12)	Reibechtheit nass: 4; trocken: 5 (ISO 105 - X12)

Note: Batch to batch variations in shade may occur within commercial tolerances.

Remarque: Une variation de couleurs peut provenir (commerciallement tolérable).

Wichtig: Handelsübliche Farbabweichungen können auftreten und be rechtigen nicht zur Reklamation.