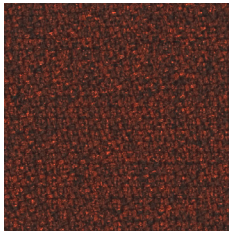


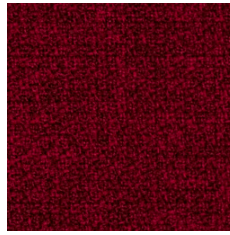
# Step | Step Melange

narbutas

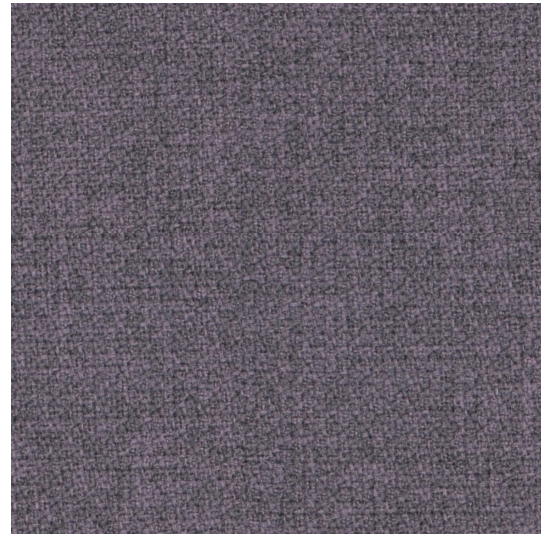
Cat. 2 | Cat.3



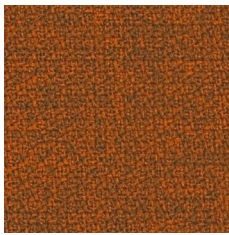
\*63075 GL24



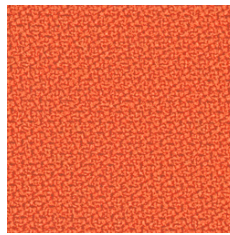
\*64013 GL18



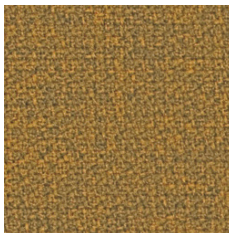
\*65093 GL83



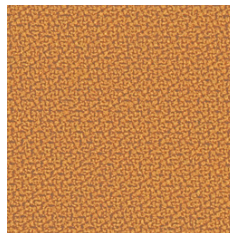
\*63082 GL10



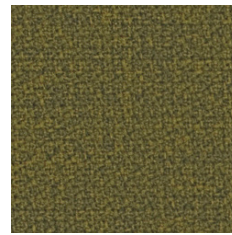
\*63082 GL11



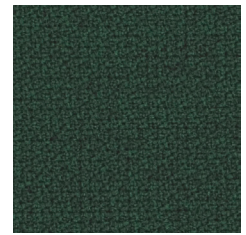
\*62057 GL16



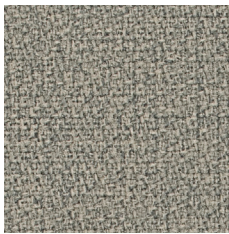
\*62057 GL17



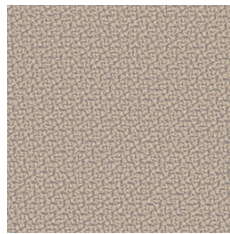
\*68119 GL08



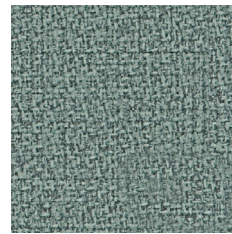
\*68161 GL26



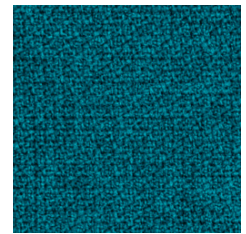
\*61104 GL70



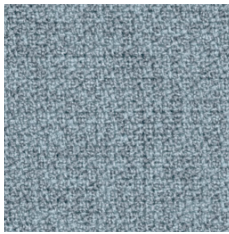
\*61149 GL15



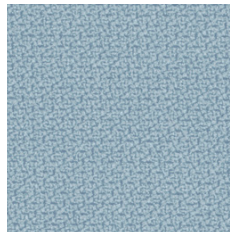
\*68118 GL50



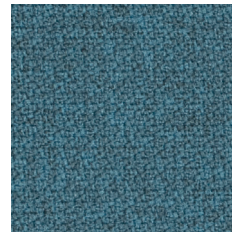
\*67007 GL02



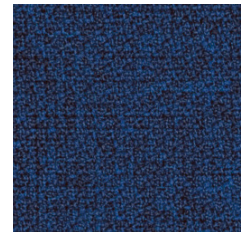
\*67004 GL06



\*67004 GL07



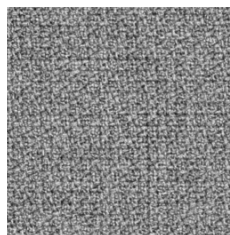
\*67072 GL28



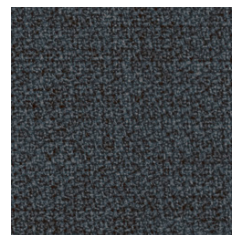
\*66149 GL04



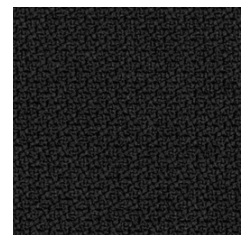
\*60011 GL34



\*60004 GL12



\*66019 GL20



\*60999 GL01

# Step | Step Melange



EN

Certified to OEKO-TEX® Standard 100  
Certified to the EU Ecolabel

## Composition

100% Trevira CS® Flame Retardant Polyester

## Weight

470 g/m<sup>2</sup>

## Abrasion resistance

100.000 Martindale cycles

## Flammability

BS EN 1021-1 (cigarette)  
BS EN 1021-2 (match)  
BS 5852: part 1  
BS 5852: part 2 (Crib 5)  
BS 7176 Medium Hazard  
UNI 9175 & UNI 9175/FA1 Classe 1 IM  
DIN 4102 B1  
NFP-P-92-503-512 M1  
ÖNORM B 3825-B1-3800-Q1 UK  
AM 18 - NF D 60-013 (only for fabric)  
CA TB 117-2013  
DIN EN 13501-1 B-s1, d0

## Light fastness

5-7 (EN ISO 105-B02)

## Fastness to rubbing

wet: 4-5; dry: 4-5 (ISO 105-X12)

FR

Certifié conforme à la norme OEKO-TEX® 100

Certifié conforme à l'écolabel européen

## Composition

100% Trevira CS® Polyester Inflammable

## Poids

470 g/m<sup>2</sup>

## Résistance à l'abrasion

100.000 Cycles de Martindale

## Inflammabilité

BS EN 1021-1 (cigarette)  
BS EN 1021-2 (allumette)  
BS 5852: part 1  
BS 5852: part 2 (Crib 5)  
BS 7176 Medium Hazard  
UNI 9175 & UNI 9175/FA1 Classe 1 IM  
DIN 4102 B1  
NFP-P-92-503-512 M1  
ÖNORM B 3825-B1-3800-Q1 UK  
AM 18 - NF D 60-013 (uniquement pour les tissus)  
CA TB 117-2013  
DIN EN 13501-1 B-s1, d0

## Stabilité à la lumière

5-7 (EN ISO 105-B02)

## Résistance au frottement

humide: 4-5; sec: 4-5 (ISO 105-X12)

DE

Zertifiziert gemäß OEKO-TEX® Standard 100

Zertifiziert nach EU Ecolabel

## Zusammensetzung

100% Trevira CS® Flammhemmendes Polyester

## Gewicht

470 g/m<sup>2</sup>

## Abriebfestigkeit

100.000 Martindale-Zyklen

## Entflammbarkeit

BS EN 1021-1 (Zigarette)  
BS EN 1021-2 (Streichholz)  
BS 5852: part 1  
BS 5852: part 2 (Crib 5)  
BS 7176 Medium Hazard  
UNI 9175 & UNI 9175/FA1 Classe 1 IM  
DIN 4102 B1  
NFP-P-92-503-512 M1  
ÖNORM B 3825-B1-3800-Q1 UK  
AM 18 - NF D 60-013 (nur für Stoff)  
CA TB 117-2013  
DIN EN 13501-1 B-s1, d0

## Lichtgeschwindigkeit

5-7 (EN ISO 105-B02)

## Reibechtheit

nass: 4-5; trocken: 4-5 (ISO 105-X12)

!

Cat. 2 applies to seating category products and Cat. 3 applies to screens and panels.

!

Batch to batch variations in shade may occur within commercial tolerances.

!

La cat. 2 s'applique aux produits de la catégorie sièges et la cat. 3 s'applique aux écrans et aux panneaux.

!

Des variations de teinte d'un lot à l'autre peuvent se produire dans le cadre des tolérances commerciales.

!

Kat. 2 gilt für Produkte der Kategorie Sitzmöbel und Kat. 3 gilt für Trennwände und Platten.

!

Innerhalb der handelsüblichen Toleranzen können Farbabweichungen von Charge zu Charge auftreten.